

EXPRESSION'S OF INTEREST

For additional information or sales call David on 0425 342 337 business hours Mon – Fri.

3.5m MOTORISED INCLINE CONVEYOR



VOGT P34FL 1 1/8" TUBE ICEMAKER - 1992 Henry Vogt, model P34-F 1.25" tube, NAT BDO 38100, S/No 9289727601, size 33 x 38, mounted on steel support structure, with switch gear



AUSTCOLD 70 TON PER DAY TUBE ICEMAKER - Item No 38161/1/GFS, Order No 13781/707, S/No 214986, Liquid Recirculation, Design C° 20T33, Shel - 20 + 40 Tower, all mounted on steel support structure, with PLC control & touch screen



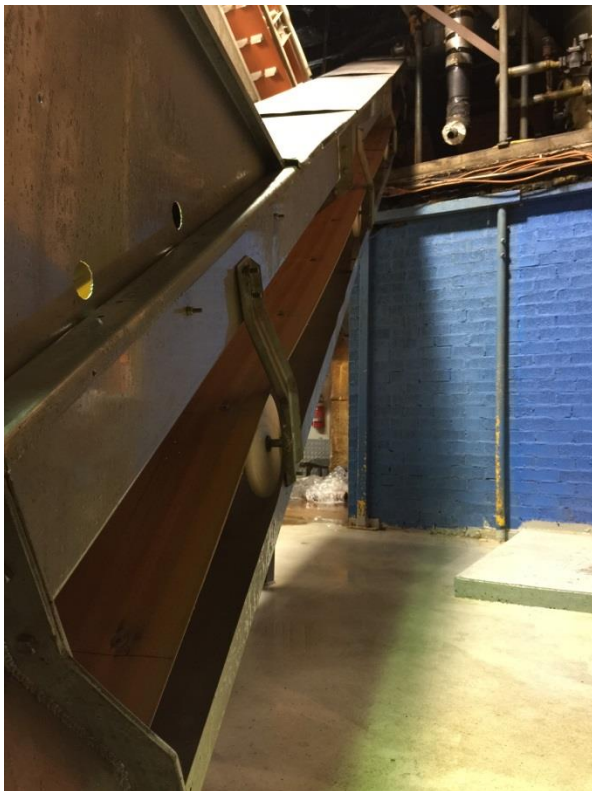
CUNO FILTRATION UNIT - stainless steel, model SD03



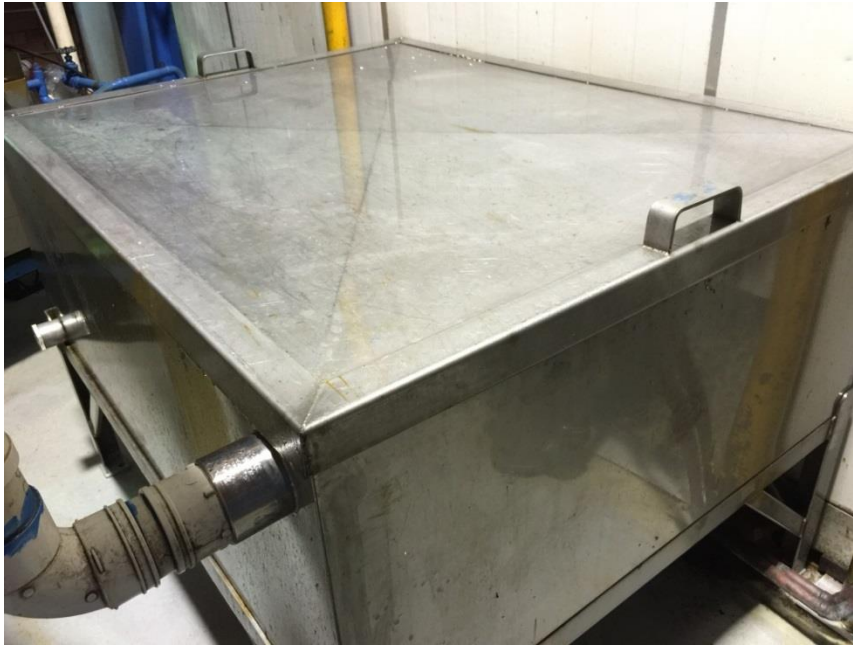
2.2M INCLINE MOTORISED BELT CONVEYOR - Stainless steel frame with cleated belt conveyor, with top mounted geared drive, approx 2200 x 3500mm



8M MOTORISED INCLINED BELT CONVEYOR



LIQUID RECIRCULATION TANK - STAINLESS STEEL WITH LID, APPROX. 1600 x 1200 x 700mm



8M MOTORISED INCLINED BELT CONVEYOR - Stainless steel, V-shaped cleated belt with top geared electric motor drive



10M LONG V BOTTOM AUGER HOPPER - Stainless steel, V-shaped ice trough hopper approx 10000mm, fully spray lagged with base, mounted trough type screw conveyor, with associated drives



3.6m x 280mm S/S AUGER - with outlet chute, on head & tail mounted geared motor drive



3.6M x 320mm S/S 2 STATION PROCESS AUGER - directional feed gates & head mounted geared motor drives



3m x 280mm GAL. AUGER - head mounted geared motor drives



4.5m S/S VERTICAL BUCKET TYPE ICE ELEVATOR - Stainless steel with 2.2kw geared motor drive, approx 4500 x 600 x 300mm



MATHIESON MANUAL ICE BAGGING MACHINE - stainless steel on stand, with top hopper feed & geared motor



4.4m PIT TOP MOTORISED INCLINED BELT CONVEYOR



LONG REACH TELESCOPIC LOADING BELT CONVEYOR



ICE RAKE - 100 TON CAPACITY & INSULATED ROOM - Rake 100 ton capacity, approx 10000 x 5500mm, with mechanical rise & fall rake mechanism, auger type discharge conveyor, all contained in white sandwich panel construction ice room, approx 11500 x 6750 x 5200mm, with 4" urethane insulation, single entrance door, rake room hoist & Bitzer refrigeration compressor type 604, S/No 2526022, with Asea 11.0kw electric motor, with PLC control, to rake room & augers



K30 PILOT AIR COMPRESSOR



BUDGE ELLIS COOLING TOWER - type FRP100RT, 100 ton capacity,

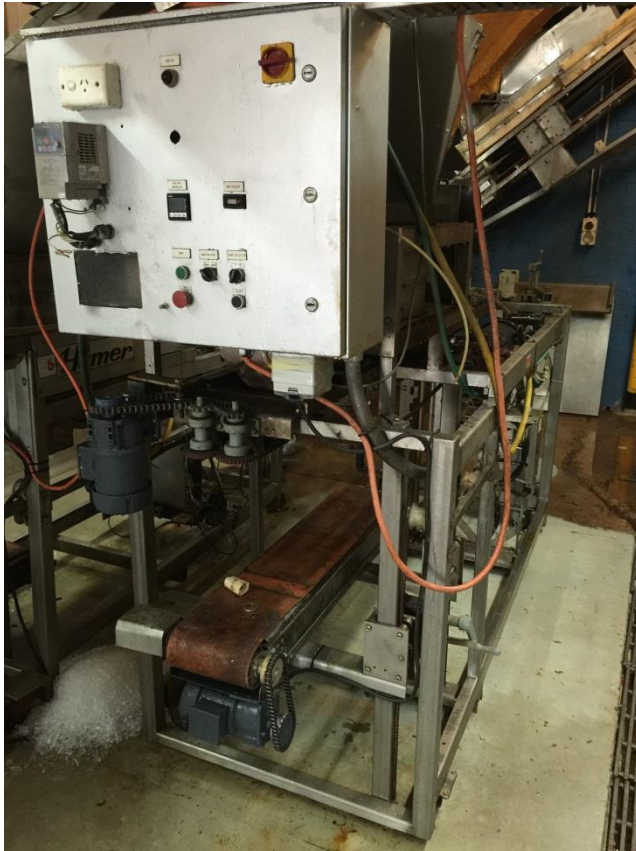


HAMER 310 AUTOMATIC FORM FILL & SEAL MACHINE - 50 bags x 5kg per minute capacity, complete with wire clip tying head model 125, with conveyor bag support & PLC controls



HAMER 525 AUTOMATIC FORM FILL & SEAL MACHINE

Hamer, model 525, S/No 9552577, packs up to 22kg bags, 25 bags x 10kg per minute capacity, complete with wire clip tying head model 125, with conveyor bag support & PLC controls



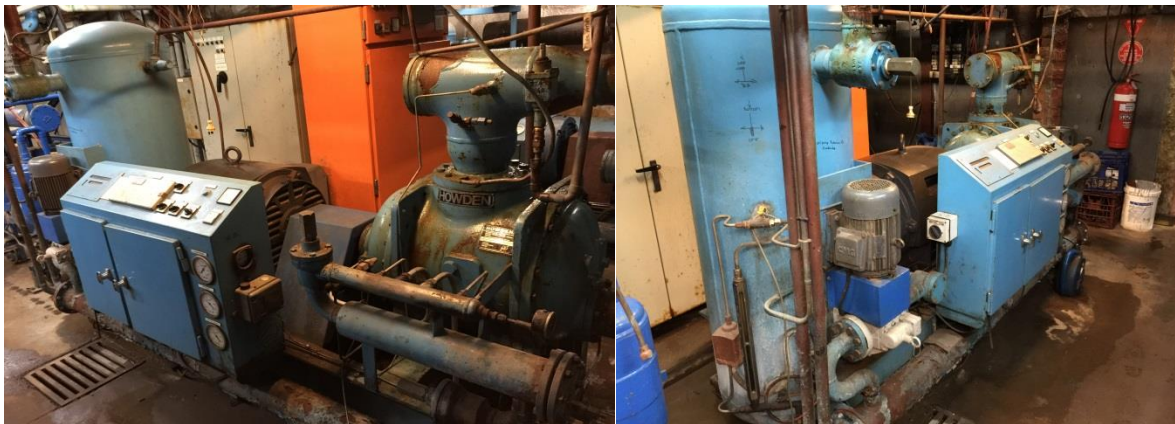
REPCO PRESS - 12 ton capacity



HOWDEN AMMONIA REFRIGERATION SCREW SET- type WRV204/198 Long Rotor, Contact No JH3500, S/No MK5E/WRV204/19326/232, direct coupled to Teco 265kw (2950RPM), electric motor, Viking oil pump AS4195, switch gear & controls, 10,813 hours,



HOWDEN AMMONIA REFRIGERATION SCREW SET - type WRV204/110 Short Rotor, Contract No JH1747, S/No MK4B/WRV204/11050/956, direct coupled to Teco 185kw (2945 RPM), electric motor, Mycom oil pump, 2.2kw switch gear & controls. 51,110 hours



HOWDEN AMMONIA REFRIGERATION SCREW SET - type WRV163 Long Rotor, Contact No JH1655, S/No MKIA/WRV163/IB036/569, direct coupled to Teco 150kw (2945 RPM) electric motor, 2.2kw Viking oil pump, switch gear & controls. 30,757 hours

